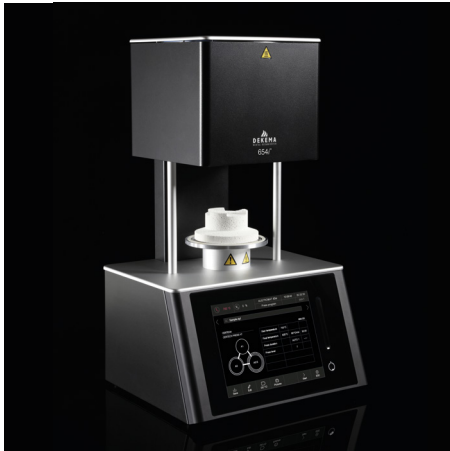




DEKEMA
trix™



PRINT

DEKEMA. Content.

| | |
|-----------------------------|----|
| DEKEMA trix™print² | 4 |
| DEKEMA trix™CAD / trix™CAM | 10 |
| DEKEMA trix™press | 18 |
| DEKEMA trix™ Accessories | 22 |
| DEKEMA trix™ Technical data | 26 |



trix

TM

print²



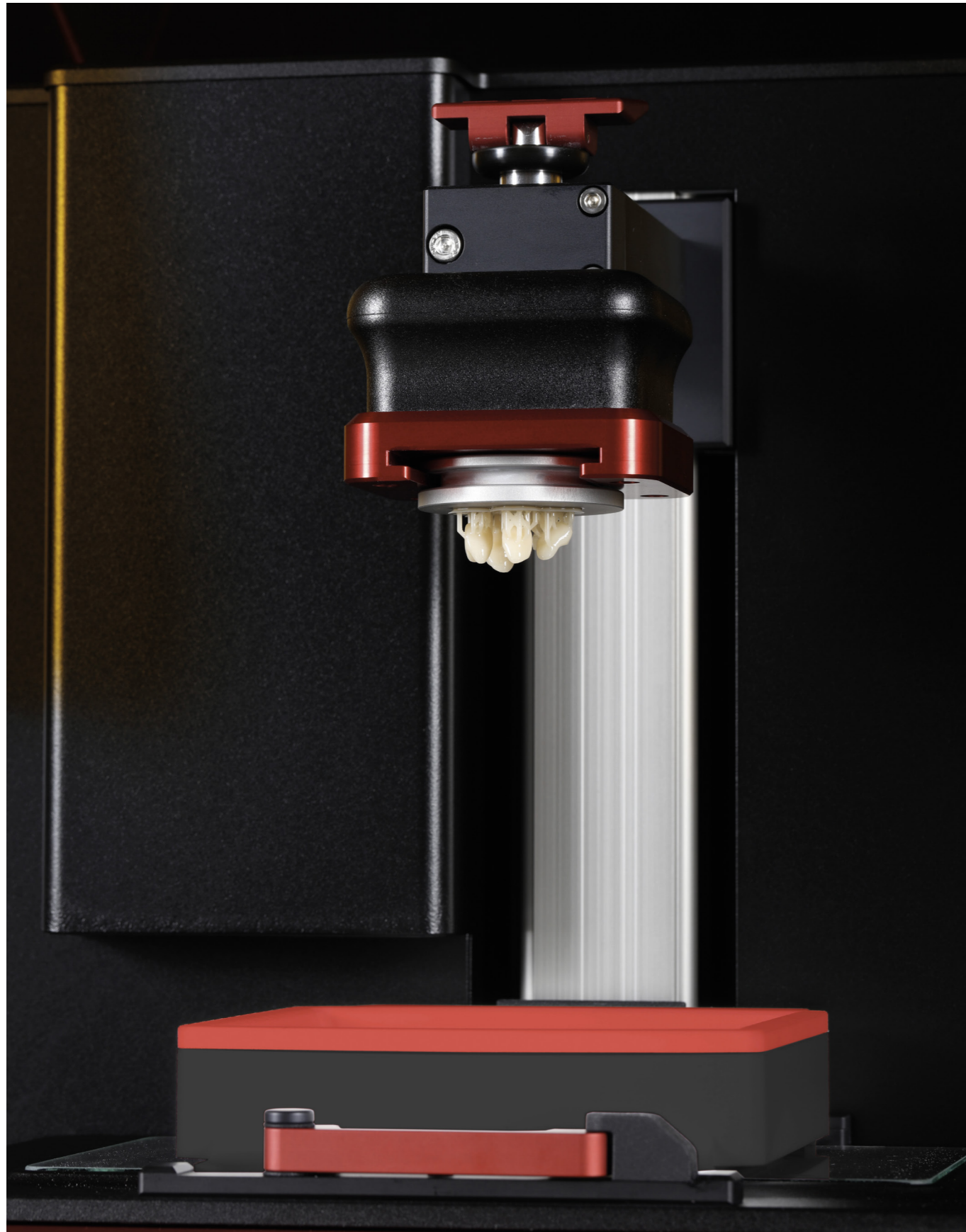
**With precision and efficiency
into the digital future.**

DEKEMA trix™ print²

trix™ print² 3D printer

With the trix™ print², you can produce fast and reliably reproducible dentures, such as crowns, bridges, veneers, partial dentures, frameworks, bite splints, as well as precise working models and drilling templates.

- » 10,1" multi-touch screen with comprehensive user interface
- » Automated transfer of project specific printing tasks
- » 3D print on top of up to two trixpress™ base plates, or a surface area of 144 x 80 mm with up to 160 mm height
- » Elegant black aluminum housing



Highest level precision

The DLP projector installed in the trix™print² stands for the highest quality standard and ensures consistent printing with sharp details and a long operating time.

Web 4.0 connectivity

Via the Web 4.0 connection, you always have the print status of the trix™print² in view, and can also control and monitor it remotely, wherever you are.

The print performance is constantly monitored by the trix™print² and you get a message when printing is finished.

The user-friendly software and easy material selection through the DEKEMA database provides even more efficiency and freedom for your daily work.

trix

TM

CAD/CAM

trix™ CAD: Worldwide unique – reliable and reproducible.



trix™ CAD

Automatic generation of the press buildup.



trix™ print²

Direct printing on the trixpress™ base plate.



Ready!

Best DEKEMA result through a perfectly coordinated workflow.



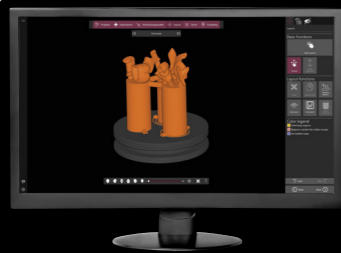
Web 4.0 connectivity

The DEKEMA Circle bidirectionally connects all applications and devices.



trix™ press

Pressing the ring inside the AUSTROMAT™ 654i™



trix™CAM: User experience² – developed with passion for experts.



trix™CAM

Automatic nesting
of the print objects
on the build platform.



trix™print²

Printing of the solid construction
from the liquid resin.



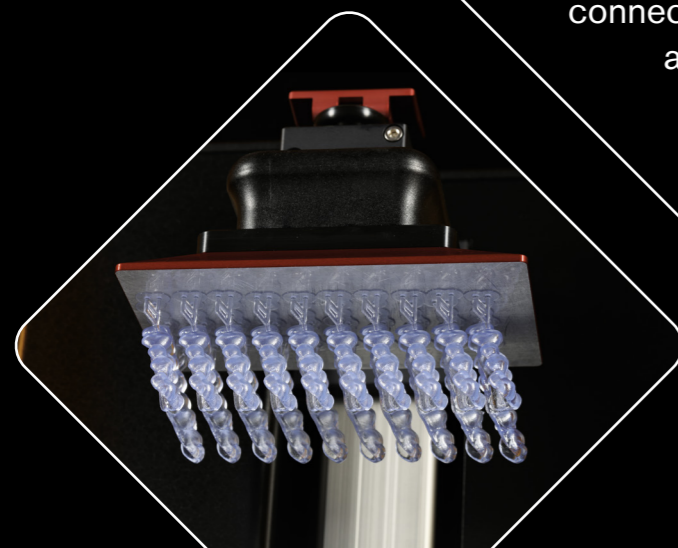
Web 4.0 connectivity

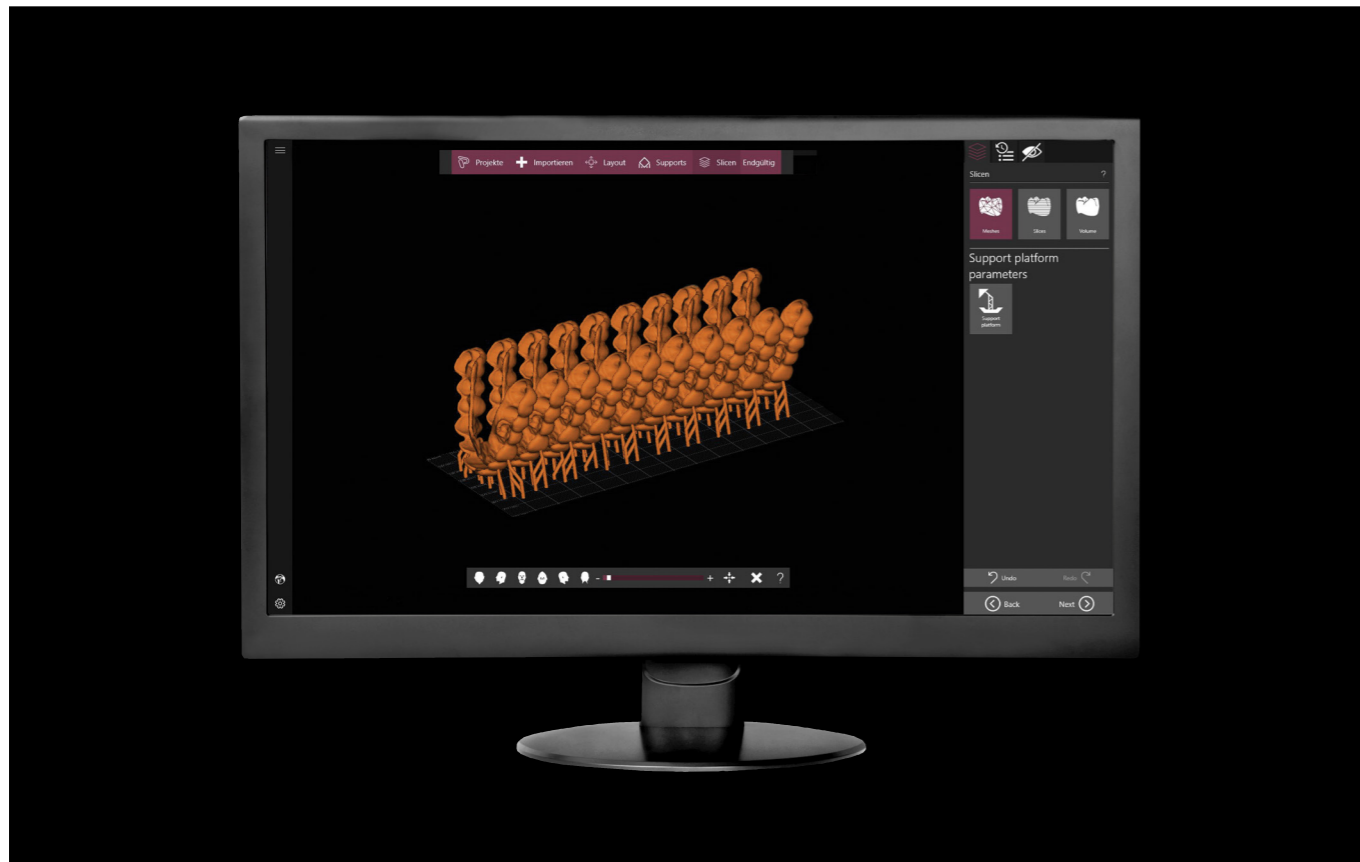
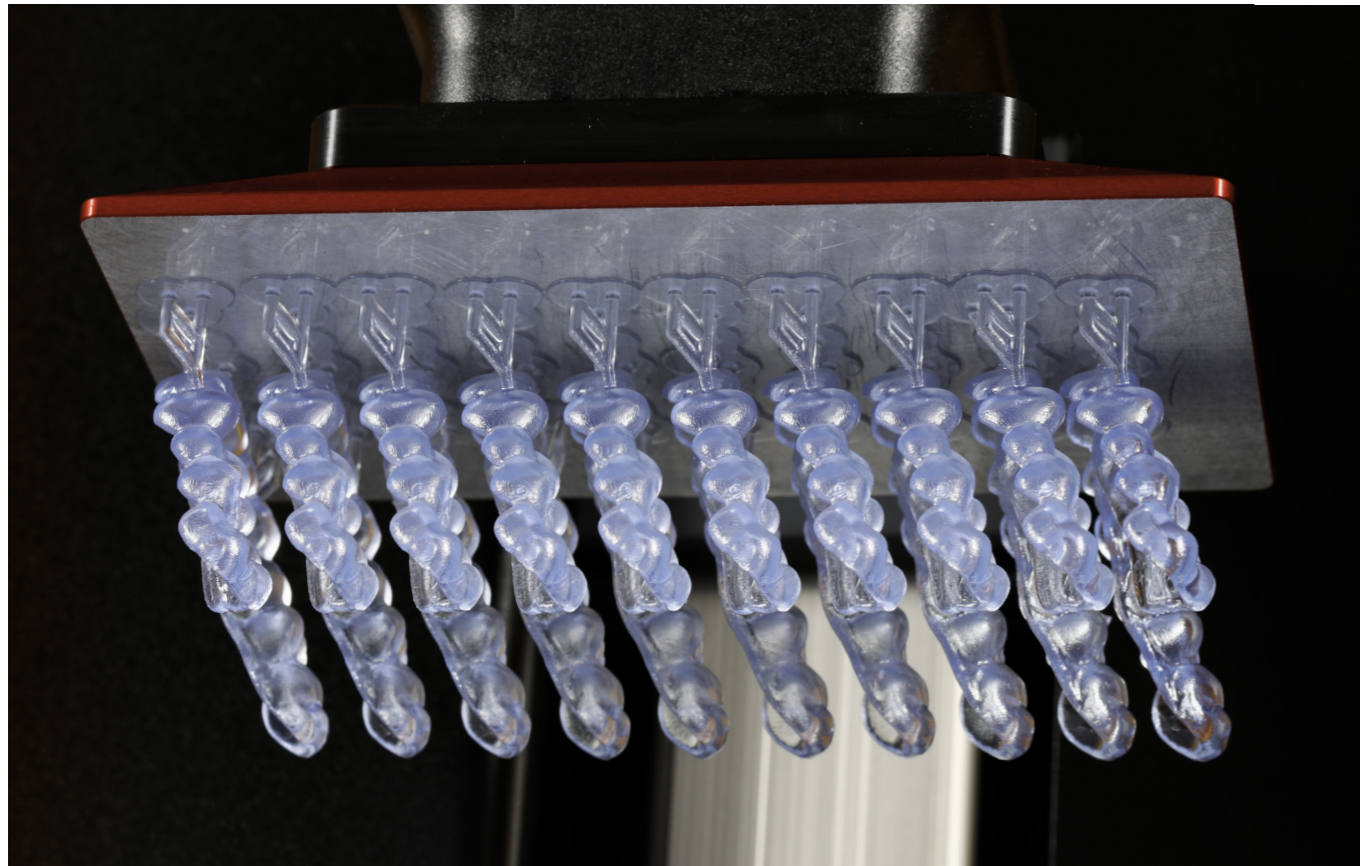
The DEKEMA Circle bidirectionally
connects all applications
and devices.



Ready!

Best DEKEMA result
through a perfectly
coordinated workflow.





**Digital Process Management
for the best results
and the highest efficiency.**

DEKEMA trix™ Software

trix™CAD – The digital printing and pressing process

- » Selection and assignment of CAD press objects
- » Automatic setup generation
- » Slicing and data transfer to trix™print via DEKEMA Circle

trix™CAM – Preparation of the printing process for dentures

- » Selection of print objects of all common formats
- » Automatic nesting (positioning of objects on the platform)
- » Slicing and data transfer to trix™print via DEKEMA Circle

trix

TM

press



DEKEMA. Innovation in design and technology.

AUSTRUMAT™ 654i™

Firing and pressing in perfection

- » Pressing, firing and glazing with or without vacuum
- » Crystallizing and infiltrating with or without vacuum
- » Even heat distribution through closed chamber design
- » Automatic control of the drying and cooling to optimize aesthetics
- » Multiple Press Time Automatic for optimal pressing results
- » Besides all common ring systems, press up to 20 g with the exclusive DEKEMA trixpress™
- » Press up to 3 different shades in one go, optimizing throughput
- » Even heat distribution over all surfaces of the investment ring which provides for exceptional aesthetics
- » Best-in-class user interface with remote operation
- » Cloud/IoT functionality through DEKEMA Circle
- » DEKEMA Autodry™
- » In elegant black and silver aluminum housing

DEKEMA trixpress™

With this patented and worldwide unique system, several plungers and colors get pressed simultaneously. This saves you an incredible amount of time and raises your profit significantly.

DEKEMA Circle

The DEKEMA Circle connects all of your DEKEMA devices. You profit from online software updates and backups, internet database connection, remote control, and the automatic transfer of project-specific firing, pressing and sintering programs.

DEKEMA IoT (Internet of Things)

Just register your DEKEMA furnace at DEKEMA online and profit from a secure backup of the process data and fast service to minimize downtime.

DEKEMA online

By registering for the DEKEMA online service at www.dekema.com, you get access to thousands of firing, pressing and sintering programs.

trix

TM

Accessories

For the perfect big result.

DEKEMA trix™ sets

print & place, set for trix™print²

Art. # 106631

Set, consisting of tools, gloves, large tank, print fundamental, network cable.



print & smile, Set für trix™print²

Art. # 106633

Set, consisting of small tank, trixpress™ holder for printing on one base plate, base plate trixpress™ anodized.



print & press, Set für trix™print²

Art. # 106634

Set, consisting of small tank, trixpress™ holder for printing on one base plate, trixpress™ holder for printing on two base plates, trix™CAST, trixpress™ ring system. (Scope of Delivery of trix™print².)



DEKEMA trix™ Accessories

- 🔥 trix™CAST: Cast resin for further processing in the burnout process, Art. # 106120
- 🔥 trixpress™ ring system, set: Flexible ring system with base plates for direct printing, Art. # 101807-01
- 🔥 trix™vest: Investment compound for flawless ceramic surfaces without reaction layer, Art. # 106290
- 🔥 trixpress™ disposable plungers: Disposable press plunger, Ø 13 mm, for single and multiple plunger pressings of all common investment materials and pressable ceramics, Art. # 105891

The right hardware for every software.

| Software license | trix™CAM Printing | trix™CAD Printing and pressing |
|--------------------------------|-------------------------|-----------------------------------|
| trix™print | 🔥 | 🔥 |
| trix™ print & place | // Scope of delivery // | |
| trix™ print & smile | 🔥 | 🔥 |
| trix™ print & press | 🔥 | 🔥 |
| trix™CAST | 🔥 | 🔥 |
| trix™ resins | 🔥 | 🔥 |
| trixpress™ ring system, set | | 🔥 |
| trix™vest | | 🔥 |
| trixpress™ disposable plungers | | 🔥 |
| AUSTROMAT™ 654i™ | | 🔥 |

🔥 required

🔥 optional



trix

TM

**Technical
data**



Technical data.

AUSTROMAT™ 6547™

| | |
|------------------------------|---|
| » Dimensions (W x H x D) | 15,08" x 25,71" x 13,50" |
| » Weight | 53 lbs |
| » Maximum firing temperature | 1.200 °C |
| » Maximum power consumption | 1.500 W |
| » Power supply | 95 – 105 V/50–60 Hz or 110 – 125 V/50–60 Hz or 220 – 240 V/50–60 Hz |

Recommended PC requirements for using the trix™CAD and trix™CAM software

| | |
|---------------------|------------------------------------|
| » CPU | Intel® Core™ i7-2600 |
| » RAM | 6 GB |
| » Graphic card | Nvidia GTX 560 with 2 GB video RAM |
| » Screen resolution | 1920 x 1080 pixel or higher |
| » Operating system | Microsoft Windows 10 and later |

DEKEMA trix™print² 3D printer

| | |
|------------------------------|--------------------------------------|
| » Dimensions | 15,39" x 21,61" x 14,37" (W x H x D) |
| » Size of installation space | 5,67" x 3,15" x 6,30" (X x Y x Z) |
| » Weight | 40 lbs |
| » Power supply | 100 – 240 V/50–60 Hz |
| » Z precision | > 1 µm |
| » Light source | 385 nm |
| » Printing speed | 70 mm/h (depending on material) |
| » Layer thickness | > 10 µm (depending on material) |



Evaluated materials for the trix™ print².



A detailed listing of all evaluated materials
can be found at www.dekema.com/service



DEKEMA

trix™

DEKEMA Dental-Keramiköfen GmbH
Industriestraße 22 • 83395 Freilassing • Germany
☎ +49-8654-46390 📧 +49-8654-66195
info@dekema.com • www.dekema.com

